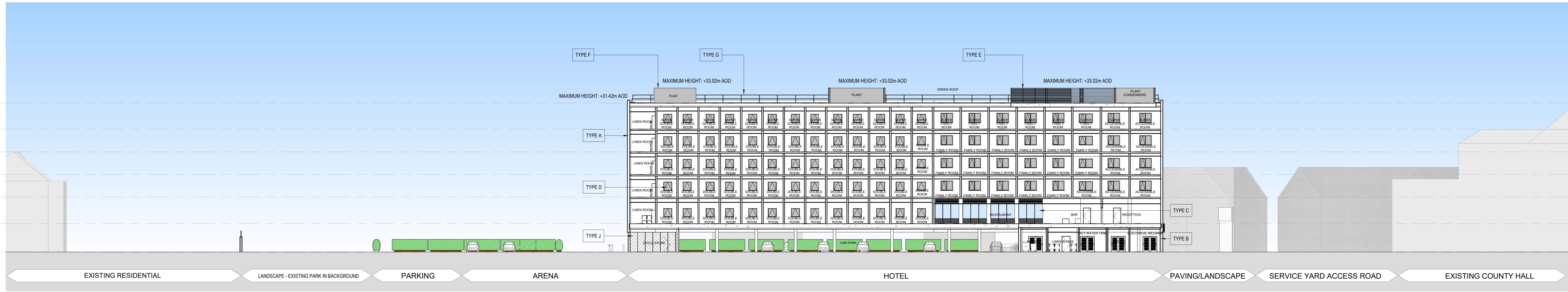


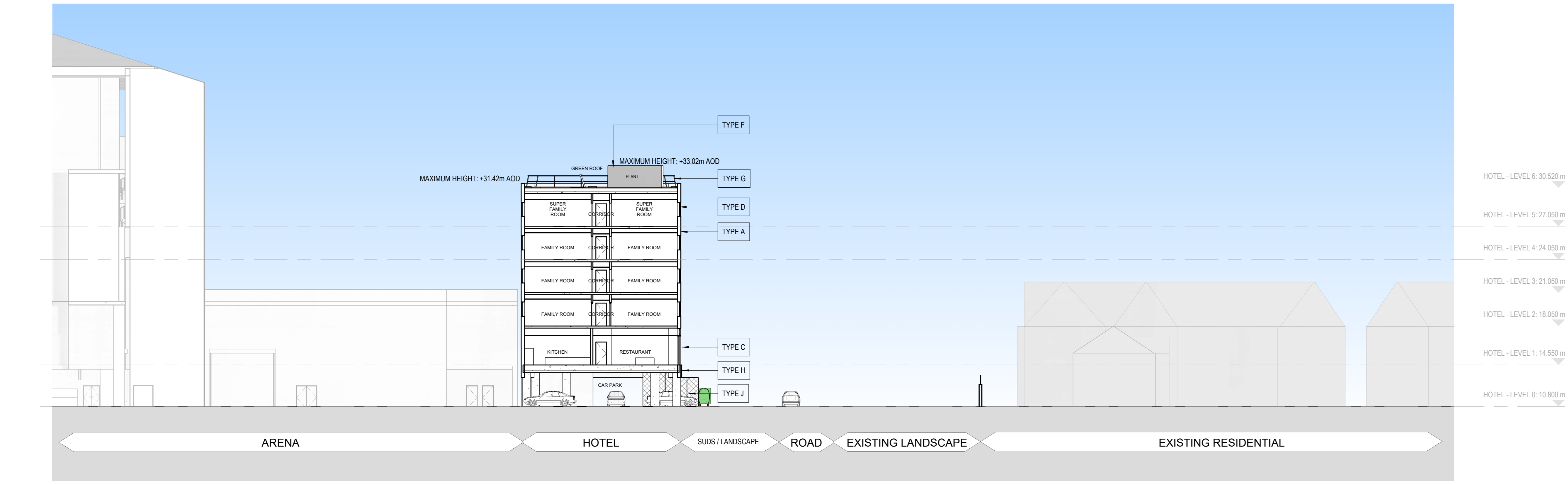


FAÇADE KEY:	
TYPE A	RENDERED FAÇADE
TYPE B	FAIR FACED BLOCKWORK
TYPE C	CURTAIN WALL GLAZING SYSTEM
TYPE D	METAL FRAME WINDOWS, COLOUR TO MATCH FAÇADE COLOUR
TYPE E	METAL CLADDING
TYPE F	SOLID METAL CLADDING
TYPE G	METAL RAILING
TYPE H	SIGNAGE DARK BLUE
TYPE I	RENDERED FAÇADE LIGHT GREY
TYPE J	METAL MESH

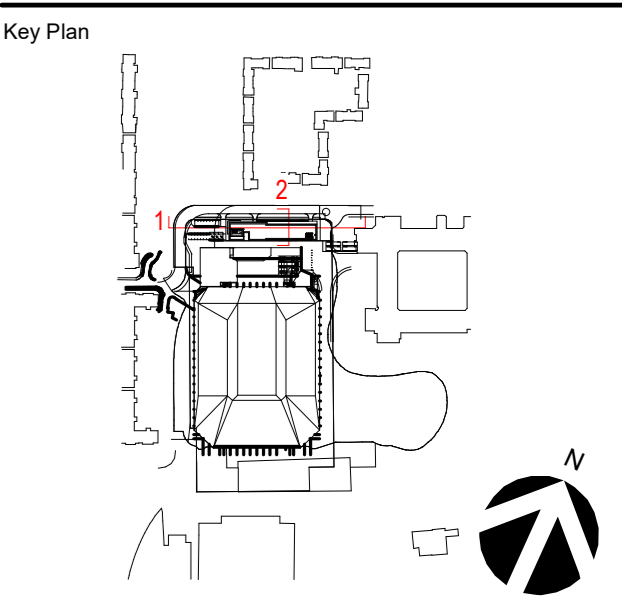
NOTE:  
1. For Arena Full Planning Application Drawings refer to Drawings with the Prefix CAH-HOK-AX and Drawings 9900 to 9912.  
2. Final Landscape Information will be included for Planning Submission



1 EAST WEST LONGITUDINAL SECTION  
1 : 200



2 NOERH SOUTH CROSS SECTION  
1 : 200



Site verify all dimensions prior to construction. Report all discrepancies to HOK immediately. This drawing is to be used in conjunction with all relevant documents and drawings.

Rev.	Description	Date
P01	DRAFT PLANNING ISSUE	13/09/2021
P02	DRAFT PLANNING SUBMISSION	26/09/2021

Drawn by: EC Reviewed by: FS  
Approved by: MK Scale @ A0: 1 : 200  
Project No: 20.33063.00

Sheet Title  
**HOTEL SECTIONS - EAST WEST AND NORTH SOUTH (SHEET 2 OF 2)**  
Original drawing © A0. Do not scale contents of this drawing.  
Sheet Number:  
CAH-HOK-HX-ZZ-DR-A-00-9912  
Station: Planning Revision: P02

