



HOK International Ltd
Qube, 90 Whitfield Street
London W1T 4EZ United Kingdom
t +44 (0)20 7636 2006
f +44 (0)20 7636 1987

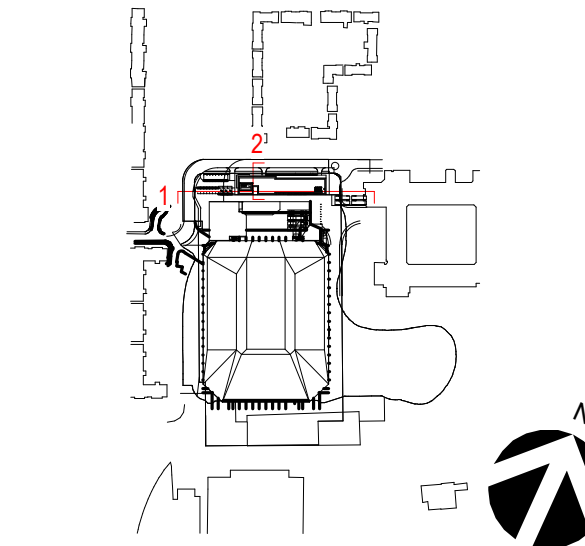
All reproduction & intellectual property rights reserved © 2021
In Association with

Arup
8-13 Fitzroy St, Bloomsbury,
London W1T 4BQ

FACADE KEY:	
TYPE A	RENDERED FACADE
TYPE B	FAIRFACED BLOCKWORK
TYPE C	CURTAIN WALL GLAZING SYSTEM
TYPE D	METAL FRAME WINDOWS, COLOUR TO MATCH FACADE COLOUR
TYPE E	METAL CLADDING
TYPE F	SOLID METAL CLADDING
TYPE G	METAL RAILING
TYPE H	SIGNAGE DARK BLUE
TYPE I	RENDERED FACADE LIGHT GREY
TYPE J	METAL MESH

NOTE:
1. For Arena Full Planning Application Drawings refer to Drawings with the Prefix CAH-HOK-AX and Drawings 9900 to 9912.
2. Final Landscape Information will be included for Planning Submission

Key Plan



Site verify all dimensions prior to construction
Report all discrepancies to HOK immediately
This drawing is to be read in conjunction with all relevant documents and drawings

Rev	Description	Date
P01	DRAFT PLANNING ISSUE	13/08/2021
P02	DRAFT PLANNING SUBMISSION	26/08/2021

Drawn by: EC Reviewed by: FS
Approved by: MK Scale @ A0: 1: 200
Project No: 20.33063.00

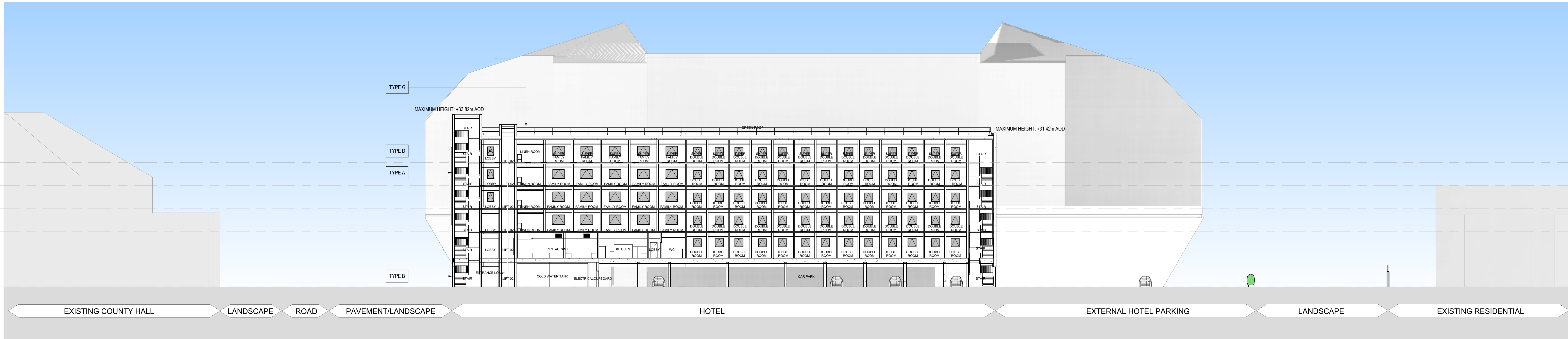
Sheet Title

HOTEL SECTIONS -
EAST WEST AND
NORTH SOUTH (SHEET
1 OF 2)

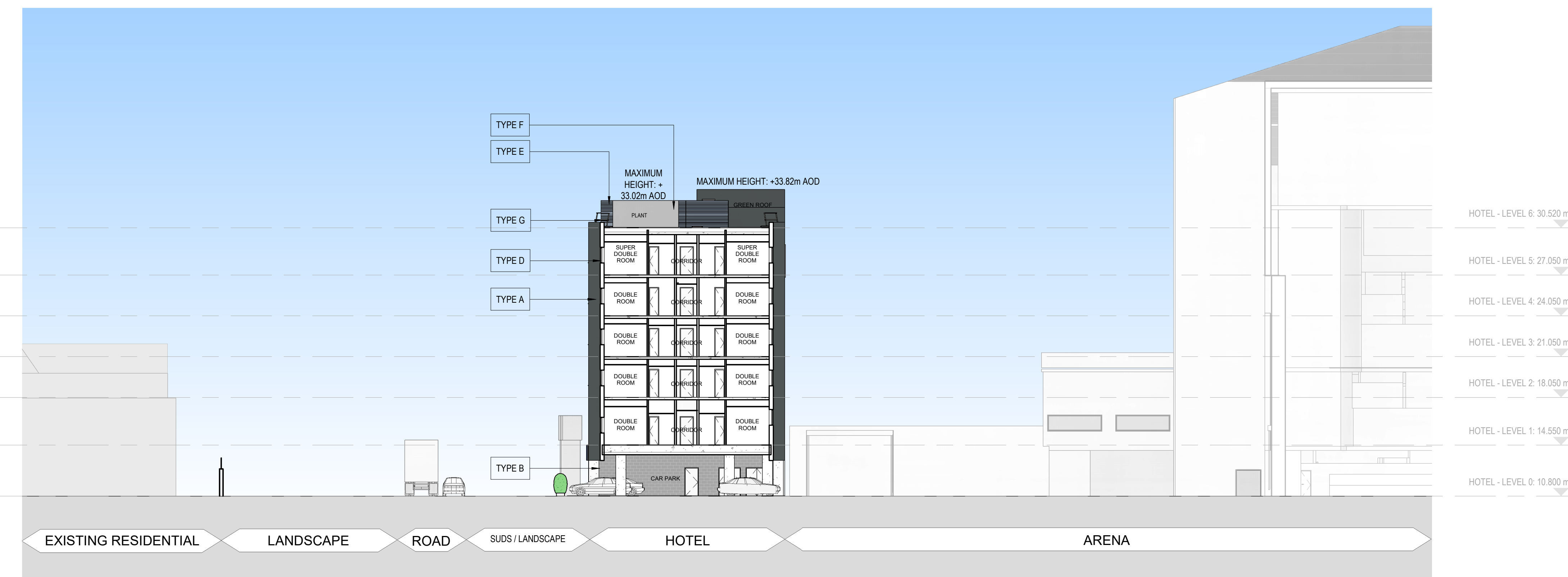
Original drawing is A0. Do not scale contents of this drawing

Sheet Number:
CAH-HOK-HX-ZZ-DR-A-00-9911

Station: Planning Revision: P02



1 EAST WEST LONGITUDINAL SECTION LOOKING
TOWARDS THE ARENA
1: 200



2 NORTH SOUTH CROSS SECTION LOOKING
TOWARDS COUNTY HALL
1: 200