



HOK International Ltd
One, 90 Whitfield Street
London W1T 4EZ United Kingdom
t +44 (0)20 7636 2006
f +44 (0)20 7636 1987

All reproduction & intellectual property rights reserved © 2021

In Association with

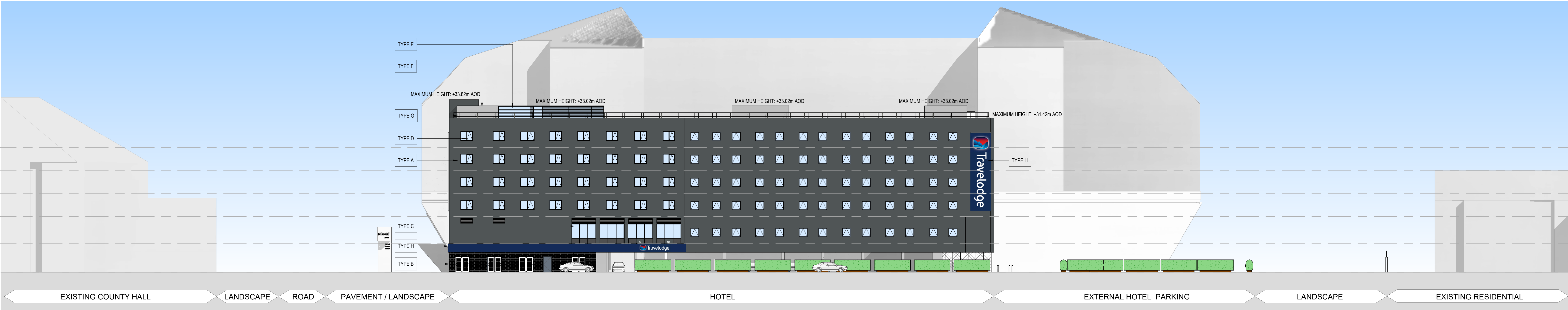
Arup

8-13 Fitzroy St, Bloomsbury,
London W1T 4BQ

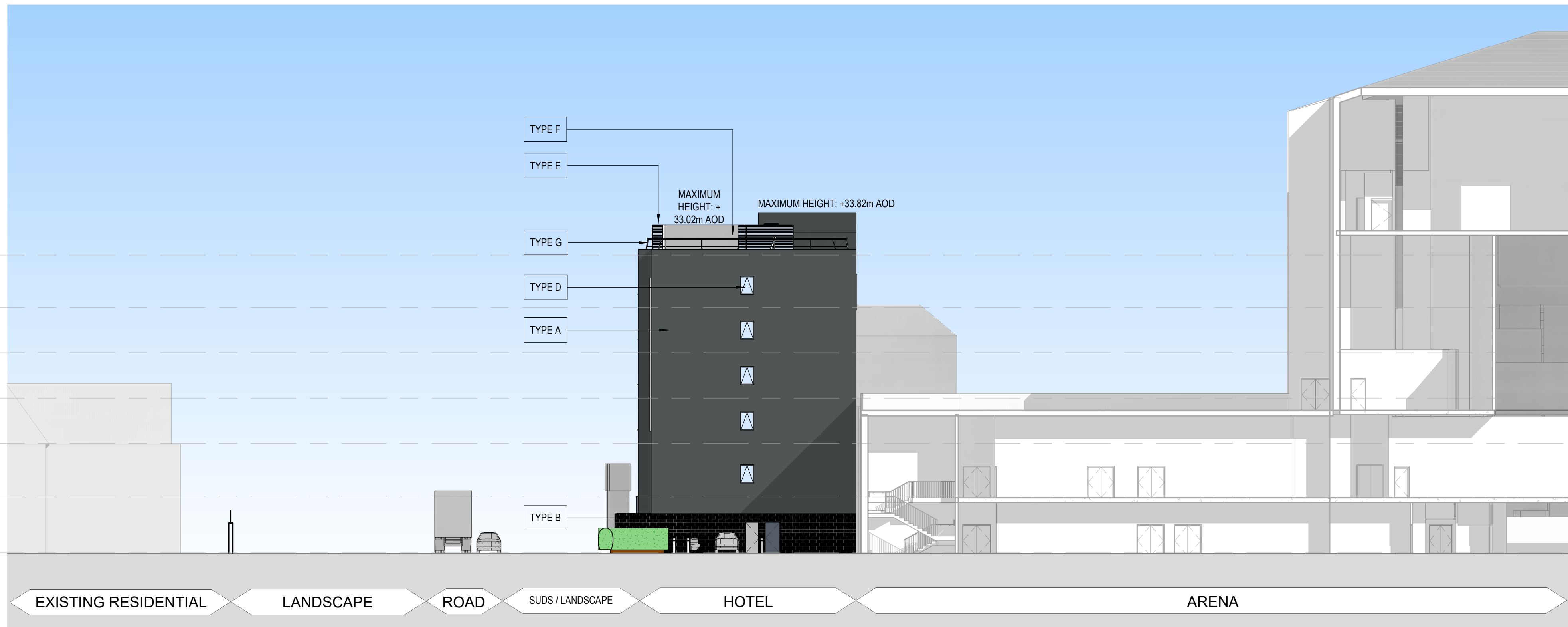
FACADE KEY:

TYPE A	RENDERED FACADE
TYPE B	FAIRFACED BLOCKWORK
TYPE C	CURTAIN WALL GLAZING SYSTEM
TYPE D	METAL FRAME WINDOWS, COLOUR TO MATCH FACADE COLOUR
TYPE E	METAL CLADDING
TYPE F	SOLID METAL CLADDING
TYPE G	METAL RAILING
TYPE H	SIGNAGE DARK BLUE
TYPE I	RENDERED FACADE LIGHT GREY
TYPE J	METAL MESH

NOTE:
1. For Arena Full Planning Application Drawings refer to Drawings with the Prefix CAH-HOK-AX and Drawings 9900 to 9912.
2. Final Landscape Information will be included for Planning Submission

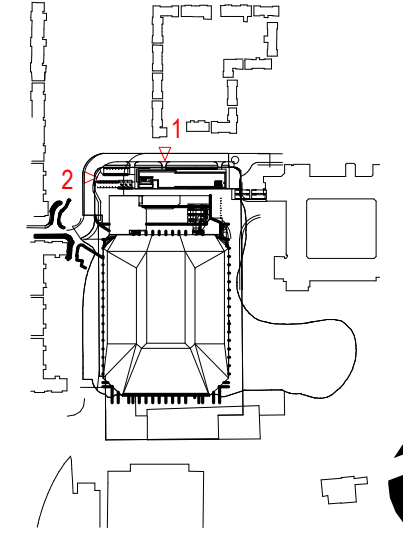


1 HOTEL - NORTH ELEVATION
1:200



2 HOTEL - WEST ELEVATION
1:200

Key Plan



Site verify all dimensions prior to construction
Report all discrepancies to HOK immediately
This drawing is to be read in conjunction with all relevant documents and drawings

Rev	Description	Date
P01	DRAFT PLANNING ISSUE	13/08/2021
P02	DRAFT PLANNING SUBMISSION	26/08/2021

Drawn by: EC Reviewed by: FS
Approved by: MK Scale @ A0: 1:200
Project No: 20.33063.00

Sheet Title

HOTEL ELEVATIONS -
NORTH AND WEST

Original drawing is A0. Do not scale contents of this drawing

Sheet Number:
CAH-HOK-HX-ZZ-DR-A-00-9910

Station: Planning Revision: P02

