



HOK International Ltd
Qube, 90 Whitfield Street
London W1T 4EZ United Kingdom
t +44 (0)20 7636 2006
f +44 (0)20 7636 1987

All reproduction & intellectual property rights reserved © 2021

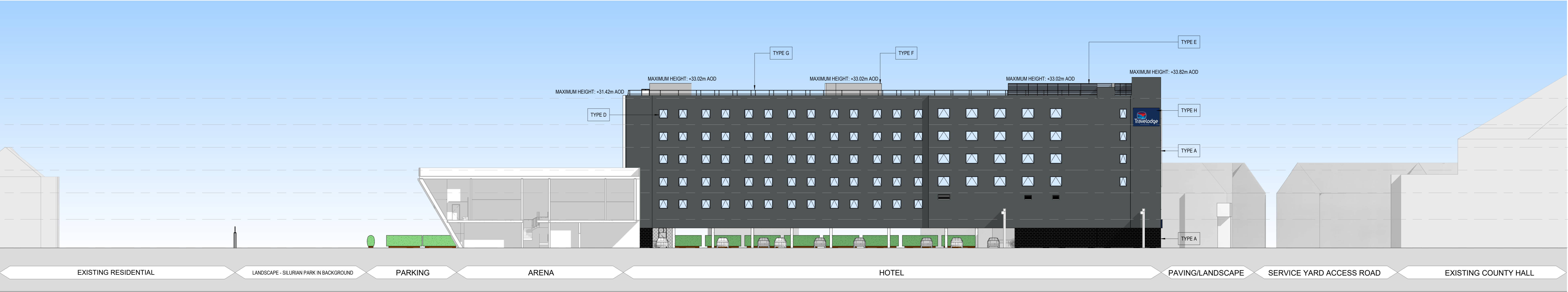
In Association with

Arup

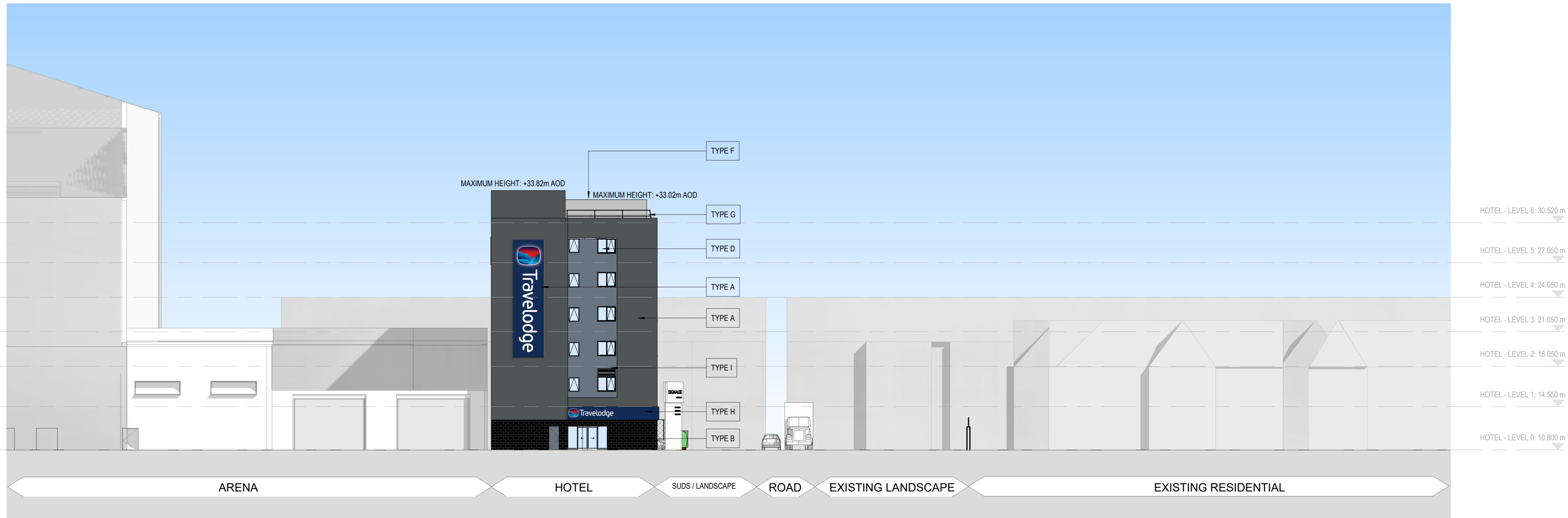
8-13 Fitzroy St, Bloomsbury,
London W1T 4BQ

| FACADE KEY: | |
|-------------|--|
| TYPE A | RENDERED FACADE |
| TYPE B | FAIRFACED BLOCKWORK |
| TYPE C | CURTAIN WALL GLAZING SYSTEM |
| TYPE D | METAL FRAME WINDOWS, COLOUR TO MATCH FACADE COLOUR |
| TYPE E | METAL CLADDING |
| TYPE F | SOLID METAL CLADDING |
| TYPE G | METAL RAILING |
| TYPE H | SIGNAGE DARK BLUE |
| TYPE I | RENDERED FACADE LIGHT GREY |
| TYPE J | METAL MESH |

NOTE:
1. For Arena Full Planning Application Drawings refer to Drawings with the Prefix CAH-HOK-AX and Drawings 9900 to 9912
2. Final Landscape Information will be included for Planning Submission

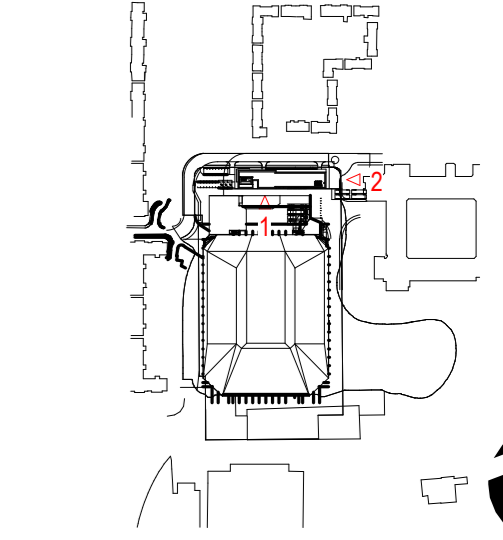


1 HOTEL - SOUTH ELEVATION
1 : 200



2 HOTEL - EAST ELEVATION
1 : 200

Key Plan



Site verify all dimensions prior to construction
Report all discrepancies to HOK immediately
This drawing is to be read in conjunction with all relevant documents and drawings

| Rev | Description | Date |
|-----|---------------------------|------------|
| P01 | DRAFT PLANNING ISSUE | 13/08/2021 |
| P02 | DRAFT PLANNING SUBMISSION | 26/08/2021 |

Drawn by: EC Reviewed by: FS
Approved by: MK Scale @ AD: 1 : 200

Project No: 20.33063.00

Sheet Title

HOTEL ELEVATIONS -
SOUTH AND EAST

Original drawing is AD. Do not scale contents of this drawing

Sheet Number:
CAH-HOK-HX-ZZ-DR-A-00-9909

Station: Planning Revision: P02

