



HOK International Ltd
Cube, 90 Whitfield Street
London W1T 4EZ United Kingdom
t +44 (0)20 7636 2006
f +44 (0)20 7636 1987

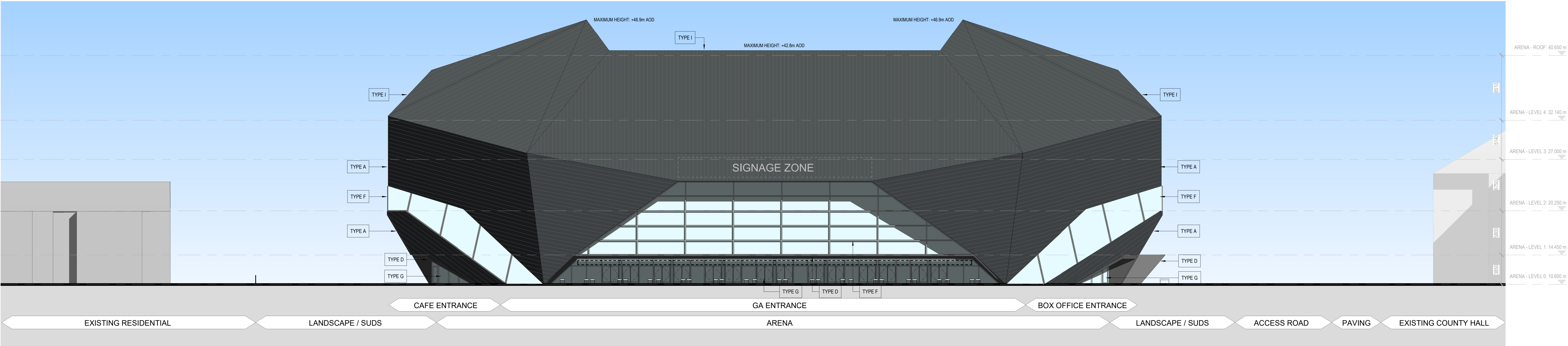
All reproduction & intellectual property rights reserved © 2021

In Association with

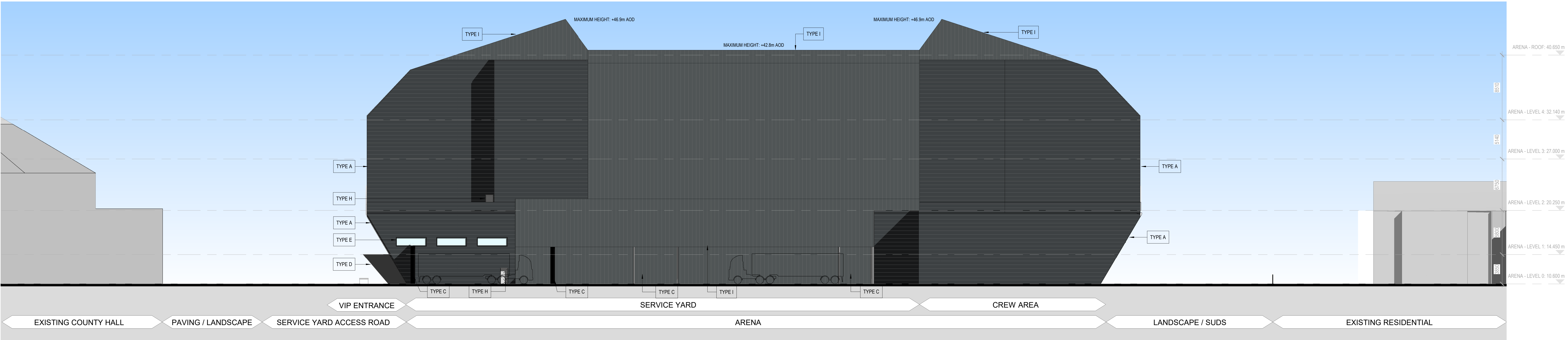
Arup

8-13 Fitzroy St, Bloomsbury,
London W1T 4BQ

KEY:	
—	FULL PLANNING APPLICATION BOUNDARY
FACADE KEY:	
TYPE A	PROFILED METAL CLADDING
TYPE B	PPC METAL LOUVRES - DARK GREY
TYPE C	PPC METAL ROLLERSHUTTER
TYPE D	METAL CANOPY
TYPE E	UNITIZED GLAZING SYSTEM
TYPE F	CURTAIN WALL GLAZING SYSTEM
TYPE G	GLAZED ENTRANCE DOORS
TYPE H	PPC METAL DOORS/ LOUVRE
TYPE I	KALZIP STANDING SEAM ROOF
TYPE J	CONCRETE PAVOURS TO ROOF
---	ENTRANCE SIGNAGE ABOVE DOORS
NOTES:	
1. For Hotel Full Planning Application Drawings refer to Drawings with the Prefix CAH-HOK-HX and Drawings 9902 to 9912	
2. For LED feature facade lighting locations please refer to the Design and Access Statement	
3. Final Landscape Information will be included for Planning Submission	

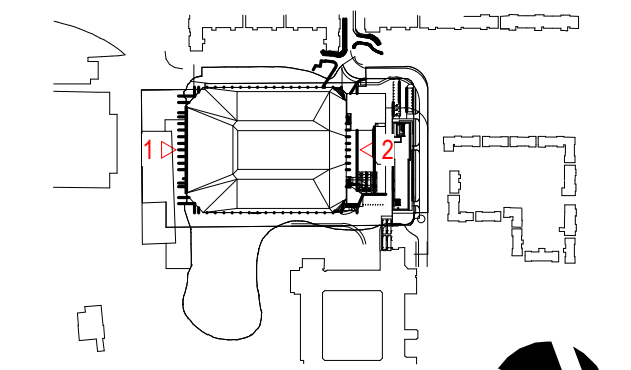


1 ARENA SOUTH ELEVATION
1:200



2 ARENA NORTH ELEVATION
1:200

Key Plan



Site verify all dimensions prior to construction
Report all discrepancies to HOK immediately
This drawing is to be used in conjunction with all relevant documents and drawings

Rev	Description	Date
P01	DRAFT PLANNING ISSUE	06/08/2021
P02	DRAFT PLANNING SUBMISSION	26/08/2021

Drawn by: AAV Reviewed by: FS
Approved by: MK Scale @ A0: 1:200
Project No: 20.33063.00

Sheet Title

ARENA ELEVATIONS -
NORTH AND SOUTH

Original drawing is A0. Do not scale contents of this drawing

Sheet Number:
CAH-HOK-AX-ZZ-DR-A-00-9908

Station: Planning Revision: P02

