

Legend:

- Hybrid application boundary
- Cardiff Council Land Ownership

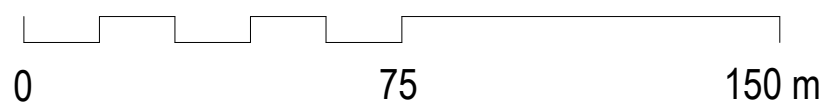
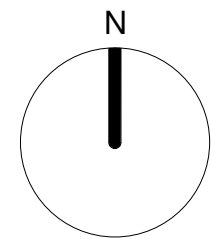
Notes:

© Rio Architects Ltd.

This drawing is copyright and must not be reproduced or disclosed to third parties without the prior written consent of Rio Architects Ltd.

Do not scale this drawing. Responsibility is not accepted by Rio Architects Ltd for errors made by others during the printing or scaling of this drawing. Use only written dimensions. It is the contractor's responsibility to verify all dimensions before commencing any work. Any discrepancies are to be notified in writing to Rio Architects Ltd immediately.

This drawing is to be read in conjunction with all other relevant project drawings, specifications and schedules prepared by Rio Architects Ltd and any other relevant consultants, specialists or subcontractors.



Rev	Description	Rev'd	Chk'd	Date
1	Red line boundary modified	JR	DL	25/08/21

STATUS: PAC SUBMISSION


SUITABILITY NUMBER KEY:	
WIP	Documentation - Sign-off
S0 - Work in Progress*	A - Fit for construction
SHARED	B - Fit for construction, with comments
S1 - Fit for co-ordination**	ARCHIVE
S2 - Fit for information	AB - As Built
S3 - Fit for internal review and comment	FC - Final Construction
S4 - Fit for construction approval	
DOCUMENTATION	
D1 - Fit for costing	* For internal pre-issue usage only.
D2 - Fit for tender	** For model file usage only.
D3 - Fit for contractor design	
D4 - Fit for manufacture/ procurement	



studio@rioarchitects.com
www.rioarchitects.com
@rioarchitects

Rio Cardiff
21a Allensbank Road
Cardiff CF14 3PN
+44 (0)29 2025 0066

Rio London
19 21 Hatton Garden
London EC1N 8BA
+44 (0)20 2691 7565



Robertson Group

PROJECT TITLE :
Atlantic Wharf, Butetown Masterplan
Cardiff

DRAWING TITLE :
Location Plan

DRAWN BY : AJ	CHECKED BY: DL	APPROVED BY : RR
JOB NO : 0371	SCALE : 1 : 2500 @ A1	
SUITABILITY : S2		
DATE : 13/05/2021	REVISION: 1	
PROJECT 0371	ORIGIN. RIO	VOLUME XX
LEVEL XX	TYPE DR	DISCIP. A
NUMBER 90500		